



School District of Manawa

Curriculum COMMITTEE MEETING

Manawa School District Office - Board Room

800 Beech Street, Manawa WI

(920)596-2525

Wednesday, September 6, 2023

5:15 P.M.

**Board of Education Committee Members:
Riske (C), Fietzer, and Krueger**

❖ **CALL TO ORDER**

❖ **PLEDGE OF ALLEGIANCE**

❖ **ROLL CALL - Verification of Quorum**

➤ *B.O.E. Members Present:*

❖ **COMPLIANCE WITH OPEN MEETING LAW NOTIFICATION** [*§19.84(2) Wis. Stats.*]

❖ **AGENDA**

1. 23-24 Library/Media (LMC) Plan Updates - Jen Krueger (Informational / Endorsement)
 - a. Presentation
 - b. Library Media Center Plan-on-a-page
2. Leadership Resource for Middle School Exploratory Course - (Informational)
 - a. Memo on Habitudes Resource
3. Summer School Report (Informational)
 - a. Report - Summer School 2023

❖ **FUTURE MEETING AGENDA ITEMS**

➤

❖ **ADJOURN**

UPCOMING MEETING(S):

- **Curriculum Committee** Meetings - 1st Wednesday every month.
- **Policy & Human Resource Committee** Meetings - 1st Wednesday every month.
- **Building & Grounds Committee** Meetings - 2nd Wednesday every month.
- **Finance Committee** Meetings - 2nd Wednesday every month.
- Regular **Board of Education** Meetings - 4th Monday every month.

* Any person with a qualifying disability under the Americans with Disabilities Act that requires the meeting or material to be in accessible format, please contact the District Administrator to request reasonable accommodation. The meeting room is wheelchair accessible. This meeting is a meeting of the Board of Education in public for the purpose of conducting the School District's business and is not to be considered a public hearing. There may be a time for public comment during the meeting as indicated in the agenda.

**Upon request to the District Administrator, submitted twenty-four (24) hours in advance, the District shall make reasonable accommodations including the provision of informational material in an alternative format for a disabled person to be able to attend this meeting.

Library Plan

School District of Manawa
2023 - 2024



Library Mission:

The School District of Manawa Libraries are committed to building healthy relationships while facilitating personal learning through the consumption and creation of knowledge in a safe environment of respect and responsibility.



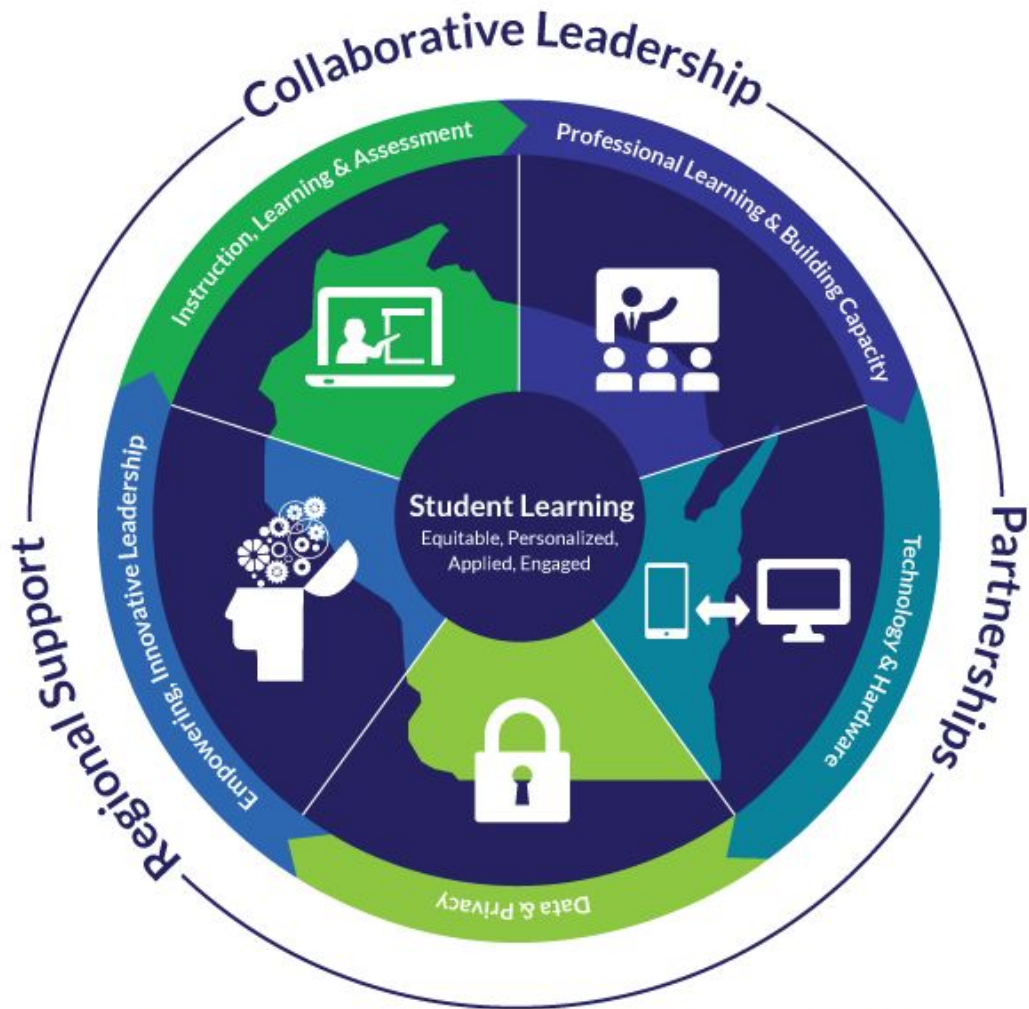
Library Vision:

Students within the School District of Manawa will attain knowledge and skills to become accomplished readers, independent learners, critical thinkers, creative problem solvers, and informed citizens through the resources and services provided by school library staff and its programs.





Planning With Future Ready Tools



Wisconsin Digital Learning Plan released December 6, 2016

Planning With Future Ready Tools

Current Status: Literacy

	2021-22	2022-23
MES	13,636	12,927
MMS/LWHS	5,151	5,236



- Circulation Statistics
- #ClassroomBookADay at Manawa Elementary
- MES Family Book Club - Read "Wishtree" by Katherine Applegate
- Diversity of Collections* - Providing Mirrors, Windows & Doors
 - MES: 12.7% diverse population* with 19% diverse fiction books
 - MMS/LWHS: 8.1% diverse population* with 43% diverse books
- Literacy Levels (based on Fountas & Pinnell level assessment)
 - 3rd - 69% below grade level
 - 5th - 62% below grade level
 - 4th - 54% below grade level
 - 5K - 56% below grade level
 - 2nd - 43% below grade level
 - 1st - 9% below grade level

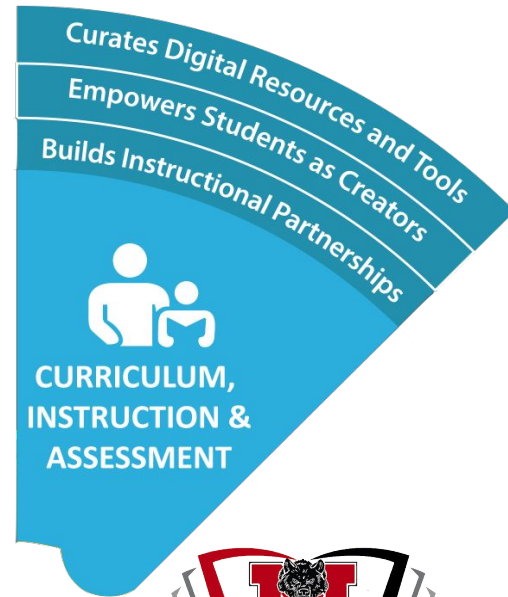


* based on WISEDASH enrollment data

Current Status: Curriculum, Instruction & Assessment

Digital Resources Provided on [Library Media Center Website - Research Center Page](#):

- District
 - BadgerLink
 - CultureGrams
 - Gale Research in Context
 - Pear Deck
 - BreakoutEDU
- Manawa Elementary School
 - BrainPop Jr.
 - BrainPop
 - Gale Kids Infobits
 - PebbleGo
 - SeeSaw
- Manawa Middle/Little Wolf High School
 - Gale Biography in Context
 - Gale Global Issues in Context
 - Gale Health & Wellness Resource Center
 - Gale LitFinder
 - Gale Opposing Viewpoints in Context
 - Kami



Library Media Center

Current Status: Curriculum, Instruction & Assessment

Empower Student Creators:

- Manawa Makers Makerspace
 - Dedicated Physical Makerspace
 - Monthly Virtual Makerspace
- Class Projects
 - Kindergarten - Animals that Hibernate
 - 1st Grade - Animal Habitats
 - 2nd Grade - Endangered Animals & Three Sentence Stories
 - 3rd Grade - Our National Parks
 - 4th Grade - WI History Placemats
 - 5th Grade - Author Study



JOSHUA TREE NATIONAL PARK

by Kerrigyn Buelow

Joshua Tree National Park was founded in the state of California on October 31st 1994. I included the Skull Rock Trail to represent the landforms and scenery of Joshua Tree. The Joshua Tree represent the vegetation that can be found in the park. Wildlife are represented by the golden eagle because I think that it is really cool they have something so similar to the bald eagle. Lastly, I included Desert Springs to represent the natural resources found in Joshua Tree National Park.



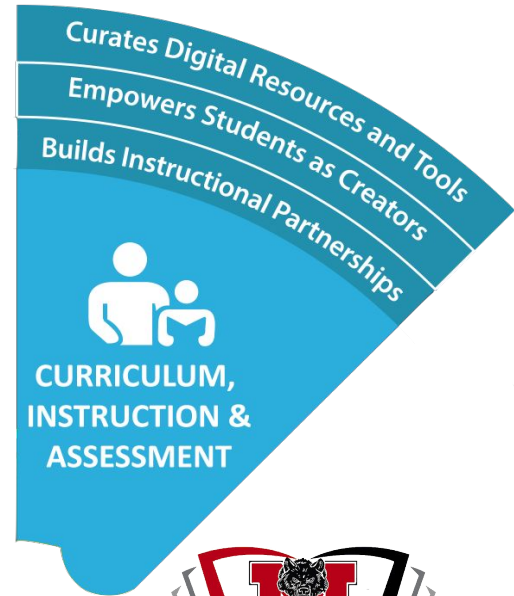
Library Media Center

Current Status:

Curriculum, Instruction & Assessment

Instructional Partnerships:

- Member of District Technology Committee
- Member of MES Building Leadership Team
- Collaborate with numerous teachers to provide resources, instruction, and technology support.
 - [Library Website - Knowledge Building Center](#)
- Utilize [Common Sense Media Digital Citizenship Curriculum](#) in grades K to 5.



Current Status: Personalized Professional Learning

Staff:

- SDM Technology Standards & Skills PD Sessions
- LMC Shared Drive & Google Classroom
- Inservice PD Trainings

Students & Staff:

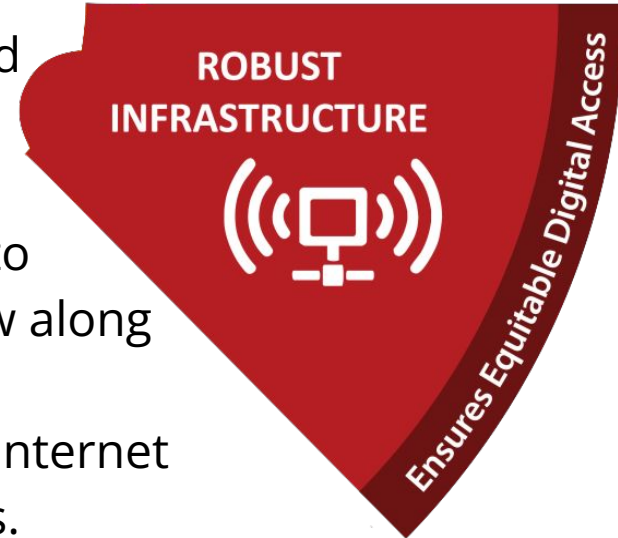
- Continually updated Library Media Center website with numerous resources on one of nine center pages.



Current Status:

Robust Infrastructure

- Usernames & passwords for databases subscribed to by the district available to students/staff at any time via website and protected Google Doc.
- Bookshare used with Special Education students to provide access to audio books that they can follow along with.
- Kajeet Wifi Hotspot program available to provide Internet access for students who do not have home access.



Current Status:

Budget & Resources

- Utilize Common School Funds to strategically improve our library collections and resources available.
 - Run Titlewave Collection Analysis twice a year to support weeding and purchasing decisions.
 - Survey staff regarding wants and needs to support weeding and purchasing decisions.
 - Read book reviews and recommendations in professional library journals.
 - Utilize “Best of Titlewave” suggestions from Follett.
- Analyze online database usage reports to determine value of renewing subscriptions.
- Seek out alternative funding through grant opportunities and DonorsChoose.



Current Status: Community Partnerships

- Maintain a terrific partnership with Sturm Memorial Library and its staff to support the needs of our students and staff.
- Maintain a presence on social media through Facebook, Twitter and Instagram.
- Joined the WSDLC (Wisconsin Schools Digital Library Consortium) to provide our students with access to ebooks and audiobooks.



Current Status: Data & Privacy

- Utilize FollowMe printing to ensure privacy with library records printed.
- Software evaluation rubric.
- Teach Common Sense Digital Citizenship curriculum to grades K to 5.



Current Status: Collaborative Leadership

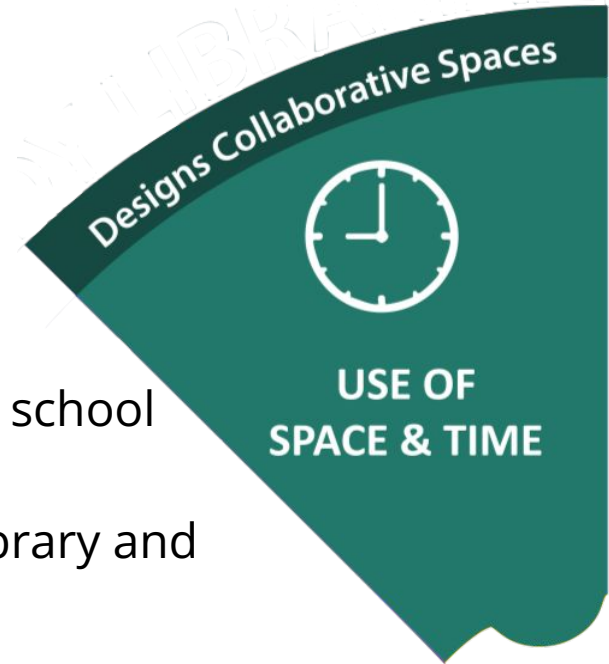
- Member of the following committees within the district:
 - Technology Committee
 - MES Building Leadership Team
 - District Calendar Committee
- Collaborate with numerous teachers to provide resources, instruction, and technology support.
 - [Library Website - Knowledge Building Center](#)

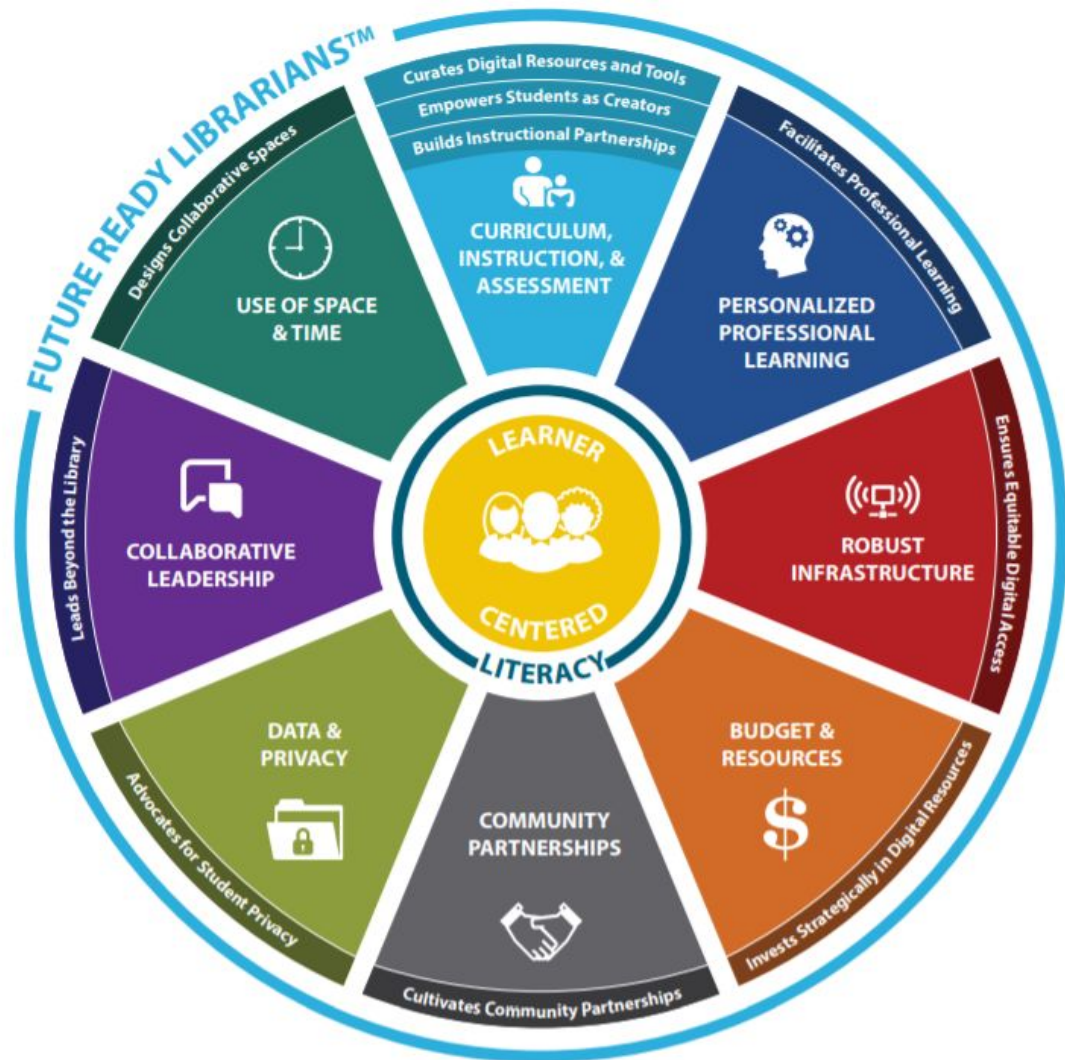


Current Status:

Use of Space & Time

- Maintain a Google Calendar showing use and availability of both MES & MMS/LWHS library spaces for school and community meetings.
- Monitor study halls at MMS/LWHS library for high school students during all periods.
- Post library schedule on both doors to the MES library and outside the MMS/LWHS library.





Review

2022-2023

Action

Plan

What were the 2022-2023 goals?

Goal 1 - By the end of the 2022-2023 school year, complete a Library Curriculum Map for grades 4K - 5 that is aligned with the AASL Standards Framework for Learners and the ISTE Standards for Students.

Goal 2 - By the end of the 2022-2023 school year, establish library programming across the district that promotes a love of reading and increases reading literacy levels.

Goal 3 - By the end of the 2022-2023 school year, increase usage of the MES Manawa Makers Makerspace.



How Did We Do?

Goal 1



By the end of the 2022-2023 school year, complete a Library Curriculum Map for grades 4K - 5 that is aligned with the AASL Standards Framework for Learners and the ISTE Standards for Students.

What was done...

- Used examples of curriculums and scope & sequences that were collected from other school libraries and placed in a [Drive Folder](#).
- Continued using Planbook, an online lesson plan tool to create and store daily lesson plans.
- Developed a [K-5 Scope & Sequence Library Curriculum](#) for the School District of Manawa

Year-end results...

- K-5 Scope & Sequence Library Curriculum complete.
- Working document that continues to be updated as necessary.



How Did We Do?

Goal 2

By the end of the 2022-2023 school year, establish library programming across the district that promotes a love of reading and increases reading literacy levels.



What was done...

- Continued a [monthly newsletter](#) that was sent home to promote library events, share library happenings, and encourage family reading.
- Collaborated with the District Reading Specialist on a winter-themed family literacy night where the annual bake-off was held.
- Organized first-ever MES Family Book Club where we read *Wishtree* by Katherine Applegate.

Year-end results...

- Literacy levels decreased at all levels:
 - 1st Grade: 0% → 9% below grade level
 - 2nd Grade: 13% → 43% below grade level
 - 3rd Grade: 31% → 69% below grade level
 - 4th Grade: 20% → 54% below grade level
 - 5th Grade: 40% → 62% below grade level
- Need to continue this goal for next year.



Library Media Center

How Did We Do?

Goal 3

By the end of the 2022-2023 school year, increase usage of the MES Manawa Makers Makerspace.



What was done...

- Monthly, the MES Virtual Makerspace was updated with activities appropriate for the month.
- During library, the 5K used the makerspace area to make slime.

Year-end results...

- Very minimal usage of the physical makerspace.
- Positive student usage of the virtual makerspace.
- Need to continue this goal for next year.



Library Media Center



2023 - 2024

Action

Plan

2023 - 2024 Action Plan



Goal 1 - By the end of the 2023-2024 school year, increase library programming across the district that promotes a love of reading and increases reading literacy levels at the elementary level.

Goal 2 - By the end of the 2023-2024 school year, increase usage of the MES Manawa Makers Makerspace.

Goal 3 - By the end of the 2023-2024 school year, increase awareness and usage of online resources throughout the district.



Library Media Center

Goal 1 - By the end of the 2023-2024 school year, increase library programming across the district that promotes a love of reading and increases reading literacy levels at the elementary level. *Supports district learning goal of preparing students for their future.*



Objectives:

- The Library Media Specialist will create library programming that:
 - Supports district reading literacy goals.
 - Involves collaboration with the district Reading Specialist.
 - Emphasizes family literacy.
 - Engages the school community in reading.

Activities:

- Continue a monthly MES library newsletter containing, news, tips, and challenges.
- Use Beanstack to provide monthly and year-long reading challenges at all levels.
- Continue MES family book club.
- Plan an author visit for MES students.
- Plan and run reading promotion programs at the MMS/LWHS.

Progress Monitoring:

- Checklist of activities completed.
- End of semester evaluation of data wall records to determine progress.



Goal 2 - By the end of the 2023-2024 school year, increase usage of the MES Manawa Makers Makerspace.

Supports district learning goal of preparing students for their future.



Objectives:

- The Library Media Specialist will provide a utilized makerspace that:
 - Supports the curriculum, specifically STEAM-based curriculum.
 - Encourages creativity and problem solving.
 - Provides the resources needed by staff to feel comfortable using the makerspace.
 - Meets the needs of the students.

Activities:

- Beginning of school year, share the following with staff:
 - List of resources available in the makerspace.
 - Low - prep makerspace activities.
 - Rules & procedures for makerspace usage.
- Offer PD during the school year to make staff comfortable with using the makerspace.
- As part of the library curriculum, utilize the makerspace for at least one project/unit per grade level.

Progress Monitoring:

- Monthly documentation of makerspace activities.
- Quarterly summary of makerspace usage based on weekly sign-ups.
- Quarterly supply restock.



Goal 3 - By the end of the 2023-2024 school year, increase awareness and usage of online resources throughout the district. Supports district learning goal of preparing students for their future.



Objectives:

- The Library Media Specialist will provide and promote online resources that:
 - Support district curriculum.
 - Assist students and staff by supporting their teaching and learning.
 - Meet the needs of the library patrons.

Activities:

- Share resources with staff at the beginning of the school year.
- Encourage staff to collaborate before beginning research based activities.
- Schedule times to present to students in classrooms when appropriate throughout the year.
- Provide resource specific training periodically throughout the school year.
- Seek feedback from students and staff regarding accessibility and usage of online resources.

Progress Monitoring:

- Quarterly monitoring of usage statistics.
- Semester surveys of students and staff regarding online resources.



Long Range Action Plan



Goal 1 - Establish a One School, One Book community reading program at each level: elementary, middle, and high school.

Goal 2 - Develop a plan to bring an author to each school for an author visit each school year.

Goal 3 - Create a library space that is accessible, flexible and comfortable for student and staff use at all levels.

Goal 4 - Maintain a makerspace at the elementary school that is easily accessible, usable, and productive.



Library Media Center

Timeline

- **Implementation** - Beginning in August 2023
- **Review** - January 2024
- **Revision** - Summer 2024



Supporting Documents

- [School District of Manawa Technology Plan](#)
- [2022 - 2023 Library Media Center Budget](#)
- [District Library Policies](#) - use the search feature to search the word "Library"
- [AASL Standards Framework for Learners](#)
- [ISTE Standards for Students](#)
- [Wisconsin ITL Standards](#)
- [SDM Technology Standard and Skills](#)





2023-2024 Plan-On-A-Page

School District of Manawa - Library Media Center

Vision

Students within the School District of Manawa will attain knowledge and skills to become accomplished readers, independent learners, critical thinkers, creative problem solvers, and informed citizens through the resources and services provided by school library staff and its programs.

Core District Values

Student Success	Highly Effective Staff	Innovative Leadership	Parent-Community Engagement	Learning Environment
-----------------	------------------------	-----------------------	-----------------------------	----------------------

Strategic Priorities

Core Focus	Goal	Objectives	Activities
Student Success	By the end of the 2023-2024 school year, increase library programming across the district that promotes a love of reading and increases reading literacy levels at the elementary level.	<ul style="list-style-type: none"> • The Library Media Specialist will create library programming that: <ul style="list-style-type: none"> ○ Supports district reading literacy goals. ○ Involves collaboration with the district Reading Specialist. ○ Emphasizes family literacy. ○ Engages the school community in reading. 	<ul style="list-style-type: none"> • Continue a monthly MES library newsletter containing, news, tips, and challenges. • Use Beanstack to provide monthly and year-long reading challenges at all levels. • Continue MES family book club. • Plan an author visit for MES students. • Plan and run reading promotion programs at the MMS/LWHS.
Progress Monitoring: <ul style="list-style-type: none"> • Checklist of activities completed. • End of semester evaluation of data wall records to determine progress. 			
Student Success	By the end of the 2023-2024 school year, increase usage of the MES Manawa Makers Makerspace.	<ul style="list-style-type: none"> • The Library Media Specialist will provide a utilized makerspace that: <ul style="list-style-type: none"> ○ Supports the curriculum, specifically STEAM-based curriculum. ○ Encourages creativity and problem solving. ○ Provides the resources needed by staff to feel comfortable using the makerspace. ○ Meets the needs of the students. 	<ul style="list-style-type: none"> • Beginning of school year, share the following with staff: <ul style="list-style-type: none"> ○ List of resources available in the makerspace. ○ Low-prep makerspace activities. ○ Rules & procedures for makerspace usage. • Offer PD during the school year to make staff comfortable with using the makerspace.

			<ul style="list-style-type: none"> As part of the library curriculum, utilize the makerspace for at least one project/unit per grade level.
Progress Monitoring: <ul style="list-style-type: none"> Monthly documentation of makerspace activities. Quarterly summary of makerspace usage based on weekly sign-ups. Quarterly supply restock. 			
Student Success	By the end of the 2023-2024 school year, increase awareness and usage of online resources throughout the district.	<ul style="list-style-type: none"> The Library Media Specialist will provide and promote online resources that: <ul style="list-style-type: none"> Support district curriculum. Assist students and staff by supporting their teaching and learning. Meet the needs of the library patrons. 	<ul style="list-style-type: none"> Share resources with staff at the beginning of the school year. Encourage staff to collaborate before beginning research based activities. Schedule times to present to students in classrooms when appropriate throughout the year. Provide resource specific training periodically throughout the school year. Seek feedback from students and staff regarding accessibility and usage of online resources.
Progress Monitoring: <ul style="list-style-type: none"> Quarterly monitoring of usage statistics. Semester surveys of students and staff regarding online resources. 			

Guiding Principle
Continuous Improvement

Long Range Action Plan
<p>Goal 1 - Establish a One School, One Book community reading program at each level: elementary, middle, and high school.</p> <p>Goal 2 - Develop a plan to bring an author to each school for an author visit each school year.</p> <p>Goal 3 - Create a library space that is accessible, flexible and comfortable for student and staff use at all levels.</p> <p>Goal 4 - Maintain a makerspace at the elementary school that is easily accessible, usable, and productive.</p>



School District of Manawa

Students Choosing to Excel, Realizing Their Strengths

Board/Committee Meeting Date: 9/6/2023

Agenda Item: 1a

Subject: Leadership Resource for Middle School Exploratory Course

Presenter(s): Michelle Johnson

I. Overall Content/Purpose:

The purpose of this memo is to inform the Curriculum Committee of the resource *Habitudes for Building Character: The Art of Self-Leadership* to utilize throughout our middle school leadership exploratory courses. The resource includes activities and lessons that:

II. Point of Emphasis / Key Communication(s):

This resource includes lessons and activities which:

- A. Build strong character based on integrity and emotional security
- B. Develop habits of self-discipline and initiative to achieve their goals
- C. Choose their own set of core values for making wise decisions in life.
- D. Create an ongoing plan for personal growth outside the classroom
- E. Identify their unique strengths and passions for a healthy self-image.
- F. Practice time-management skills to maximize each day and do what really counts.

Informational Purpose

III. Board Motion (none needed)

IV. Contact for More Information:

V. **Name:** Michelle Johnson **email:** mjohnson@manawaschools.org